



# Leica Autostainer XL

Programmable Routine Stainer For High Flexibility  
and Reliability in Histology and Cytology

Living up to Life

**Leica**  
MICROSYSTEMS

# Flexibility, High Specimen Throughput and Maximum Quality and Safety

The Leica Autostainer XL for routine staining in the histopathology laboratory has set proven standards: Since the instrument was introduced, more than 2,000 labs worldwide have decided on the Autostainer XL principle of innovation plus flexibility plus reliability, thus making the instrument one of the most successful within its class. With our established instrument generation we have taken the standard in histological routine staining even further. One very important feature of the Leica Autostainer XL is that it can be used for H&E routine staining alone or simultaneously with other staining protocols. Without exception, users of the instrument confirm that the tissue sections adhere firmly to the slides and staining results are exceptionally reproducible. Because of its simple and logical operation daily work with the Autostainer XL is especially easy and efficient.

The Leica Autostainer XL's precision-made, trouble-free, stainless steel robot arm moves swiftly and quietly on the x, y and z direction motion axes to process the slide racks.



The microprocessor controlled Leica Autostainer XL has 15 programs and is designed to be simple to use and operate.



The Leica Autostainer XL has an innovative continuous load and unload drawer access and robot arm system that lets you continue slide processing without stopping the instrument's operation.



## Leica Autostainer XL – at one glance...

- Compact, space saving H&E stainer for routine applications
- High specimen throughput
- Simultaneous realization of various different staining protocols
- Exact incubation times
- Continuous slide unload / reload function without having to interrupt a staining cycle or open the lid
- Simple, menu-driven programming
- Incubation times and sequence of use of reagent stations freely programmable
- Integrated oven for optimal slide drying
- Reagent containers can be exchanged quickly and easily
- Integrated fume extraction system with activated charcoal filter
- Minimized user exposure to hazardous reagent fumes
- Easy-to-clean and resistant surfaces made out of polyester epoxy resin and stainless steel.



## Leica CV5030 Glass Coverslipper

A glass coverslipper flexible enough to meet the needs of your laboratory.

The Leica CV5030 Glass Coverslipper easily adapts to the specific requirements of varying samples such as histology sections, cytology smears, and monolayers. The CV5030 economically produces slides of superior optical quality and reliable long-term storage. The acceptance of common brands of mounting media and different sizes of coverglass allows the CV5030 to conform to your current laboratory environment. The simple operation and advanced engineering of the CV5030 will provide years of reliable use.



Fully automated staining with the **Leica Autostainer XL** and fully automated coverslipping with the **Leica CV5030**



... combined to form the:

## Autostainer XL Workstation

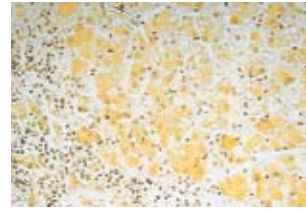


**A totally automated system featuring walk-away convenience**

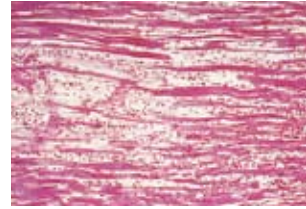
As soon as the staining procedure is completed, an innovative robot arm transfers the slide racks from the stainer to the coverslipper. Absolutely no user intervention is required.



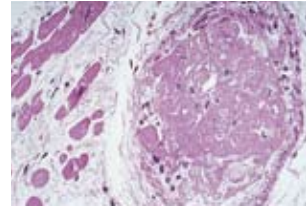
Chronic  
progreidant  
hepatitis;  
van Gieson



Acute cardiac  
infarction  
(24 hours old);  
H&E



Micro embolus  
in the heart;  
H&E



Lid – Covers the entire staining operations area providing user protection against reagent fumes. Gas pressure spring prevents sudden closure of the lid.

Fume extraction system – with replaceable activated charcoal filter, which absorbs hazardous fumes.

Robot arm – With “x, y and z” direction motion picks up and places racks.

Quick reference guide

At least 18 reagent stations – each one with a capacity of 450 ml. Lids prevent reagents from evaporating. Easy to lift out reagent containers.

Rack Exit Door – Allows for continuous slide unloading without interrupting the staining process.

Rack load and unload door opening indicators.

5 wash stations – with flow control.

Rack Entry Door – Allows for continuous slide loading without interrupting the staining process.

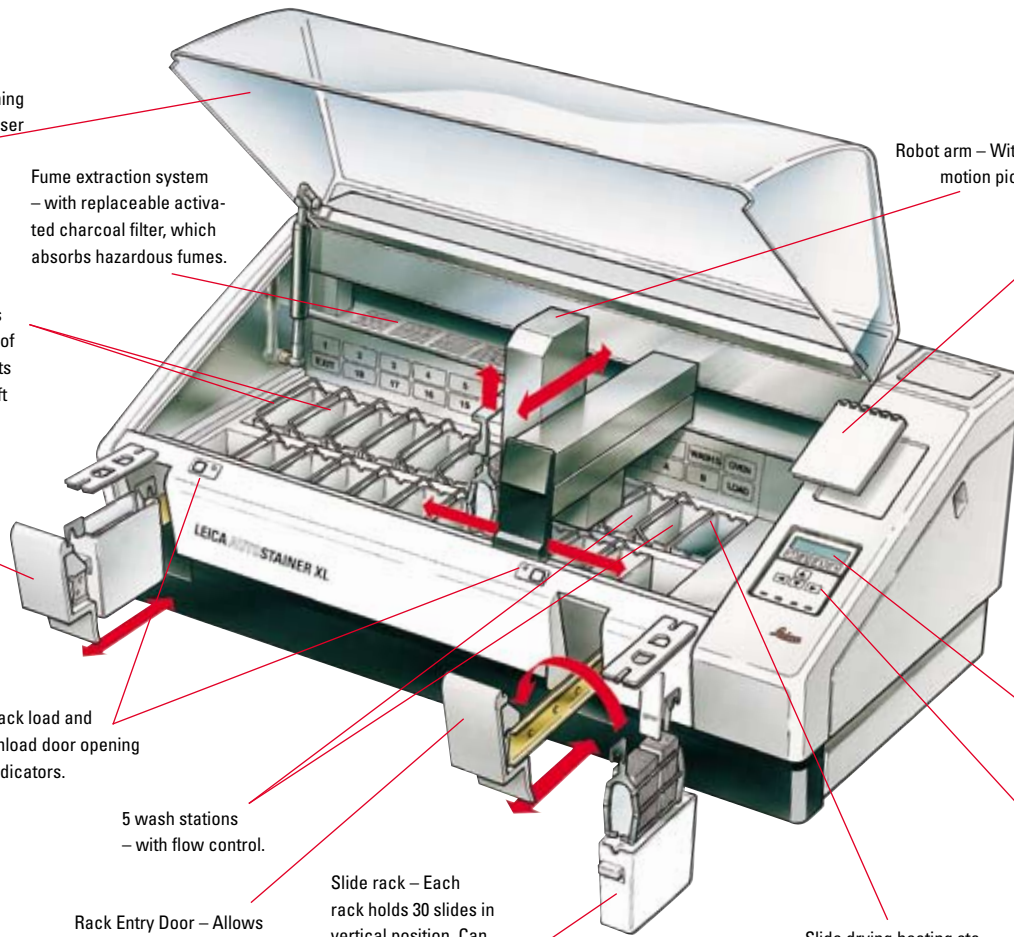
Slide rack – Each rack holds 30 slides in vertical position. Can process up to 11 racks at one time. Designed to minimize carry over of reagents.

Slide drying heating station – Temperature range OFF/30° to 65° C.

Computer display – 20 characters, 4 line LCD with LED backlighting.

Computer controlled keyboard – Membrane keyboard with four function keys, four cursor keys, plus LEDs for power, processing, alarm and unload indicators.

Dimensions:  
Width: 1090 mm  
Depth: 670 mm  
Height: 510 mm  
Weight: 65 kg



# Leica Autostainer XL – Technical Specifications

Specimen slide throughput:..... at least 200 specimen slides per hour (depending on the selected program – up to 600 slides per hour)	Oven:.....1
Loading capacity:..... 11 slide racks	Oven chamber temperature:.....off or 30 °C to 65 °C
Loading capacity per slide rack:.....30 specimen slides	Incubation time setting:.....from 0 sec. up to 99 min, 59 sec.
Total number of processing stations:..... 26	Load / unload stations:.....1 each
Reagent stations:..... at least 18	Permanent memory capacity:.....15 programs, up to 25 program steps each
Reagent container volume:.....450 ml	Dimensions (W x D x H):.....109 cm x 67 cm x 51 cm 42.2 in. x 26 in. x 20 in.
Number of wash stations:.....max. 5	Weight:..... 65 kg/143 lbs.
	Voltages:..... 110 V - 120 V, 50 Hz - 60 Hz 230 V - 240 V, 50 Hz - 60 Hz

## Leica Autostainer XL Workstation

Instrument type:.....Automated Stainer (Leica Autostainer XL) and Coverslipper (Leica CV5030), modular, connected through Leica Transfer Station TS5015	Supply voltage:.....see individual instruments (TS5015 Transfer Station is fully dependent on CV5030, electrical and control)
Sample types:.....Histology and Cytology specimen	Dimensions (W x D x H):.....165 cm 67 x cm x 55 cm 65 in. x 26 in. x 22 in.
Fume handling:.....Activated carbon filter and fume extraction hose system	Dry weight:.....approx. 164 kg approx. 361 lbs.

For details on individual module characteristics please refer to the instrument data information.

Conforms to these safety and quality standards: UL/c-UL and CSA. Highly sophisticated design, manufacturing and quality assurance procedures – in compliance with DIN EN ISO 9001 – assure maximum quality and reliability.

Country of origin: Federal Republic of Germany.

Wide range of accessories on request. Technical specifications subject to change without prior notice.

### Active worldwide

Australia:	North Ryde	Tel. +61 2 8870 3500	Fax +61 2 9878 1055
Austria:	Vienna	Tel. +43 1 486 80 50 0	Fax +43 1 486 80 50 30
Belgium:	Groot Bijgaarden	Tel. +32 2 790 98 50	Fax +32 2 790 98 68
Canada:	Richmond Hill/Ontario	Tel. +1 905 762 2000	Fax +1 905 762 8937
Denmark:	Ballerup	Tel. +45 4454 0101	Fax +45 4454 0111
France:	Rueil-Malmaison	Tel. +33 1 47 32 85 85	Fax +33 1 47 32 85 86
Germany:	Wetzlar	Tel. +49 64 41 29 40 00	Fax +49 64 41 29 41 55
Italy:	Milan	Tel. +39 02 574 861	Fax +39 02 574 03392
Japan:	Tokyo	Tel. +81 3 5421 2800	Fax +81 3 5421 2896
Korea:	Seoul	Tel. +82 2 514 65 43	Fax +82 2 514 65 48
Netherlands:	Rijswijk	Tel. +31 70 4132 100	Fax +31 70 4132 109
People's Rep. of China:	Hong Kong	Tel. +852 2564 6699	Fax +852 2564 4163
Portugal:	Lisbon	Tel. +351 21 388 9112	Fax +351 21 385 4668
Singapore		Tel. +65 6779 7823	Fax +65 6773 0628
Spain:	Barcelona	Tel. +34 93 494 95 30	Fax +34 93 494 95 32
Sweden:	Kista	Tel. +46 8 625 45 45	Fax +46 8 625 45 10
Switzerland:	Heerbrugg	Tel. +41 71 726 34 34	Fax +41 71 726 34 44
United Kingdom:	Milton Keynes	Tel. +44 1908 246 246	Fax +44 1908 609 992
USA:	Bannockburn/Illinois	Tel. +1 847 405 0123	Fax +1 847 405 0164



and representatives in more than 100 countries

[www.leica-microsystems.com](http://www.leica-microsystems.com)

**Leica**  
MICROSYSTEMS